



BEBAUUNGSPLAN "ÜBERACKER, HOCHGSTATTWEG"

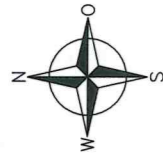
PLANDATUM: 23.11.2009

M = 1 : 500

GEÄNDERT: 08.06.2010

16.09.2010

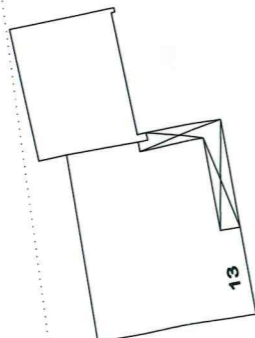
W. Geitlich



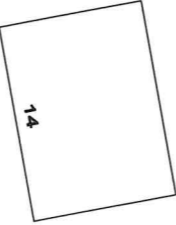
GR 130
ROK EG 514,01 ü NN
WA
H = 53,96 ü NN
Fahrtzeugstellplatz
823/1

885/1

13

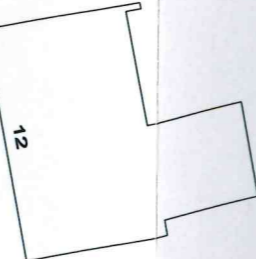


819/1



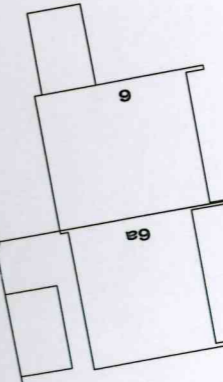
807/9

1183



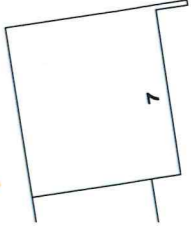
807

807/10



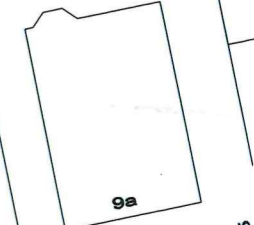
807/1

807/14



807/11

807/3



807/15